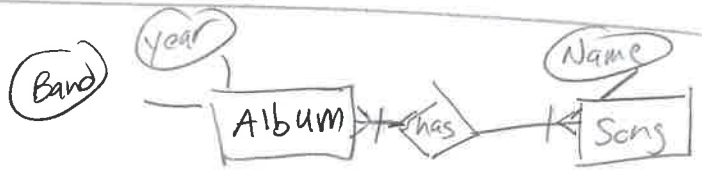
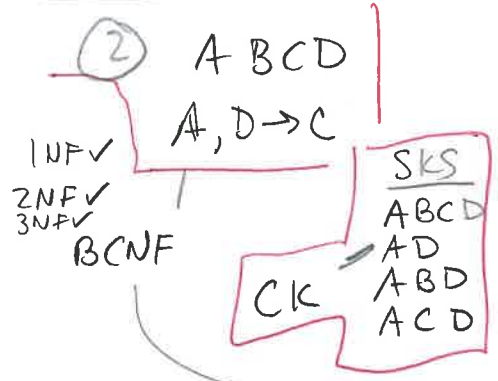
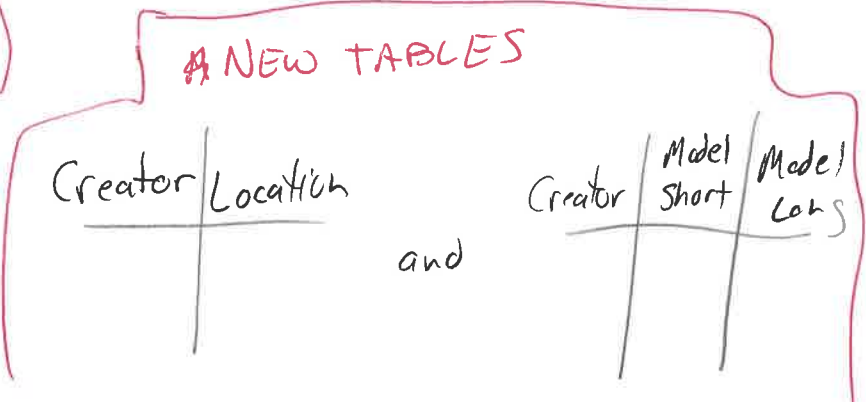
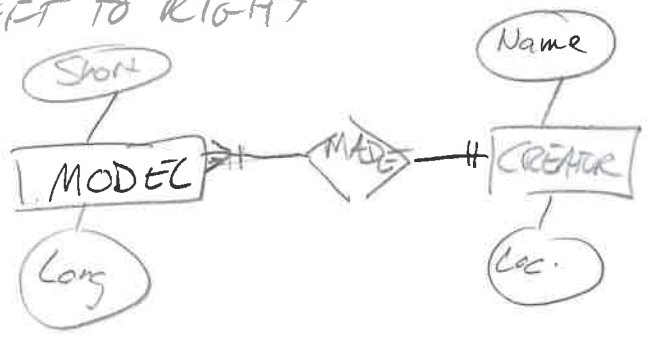
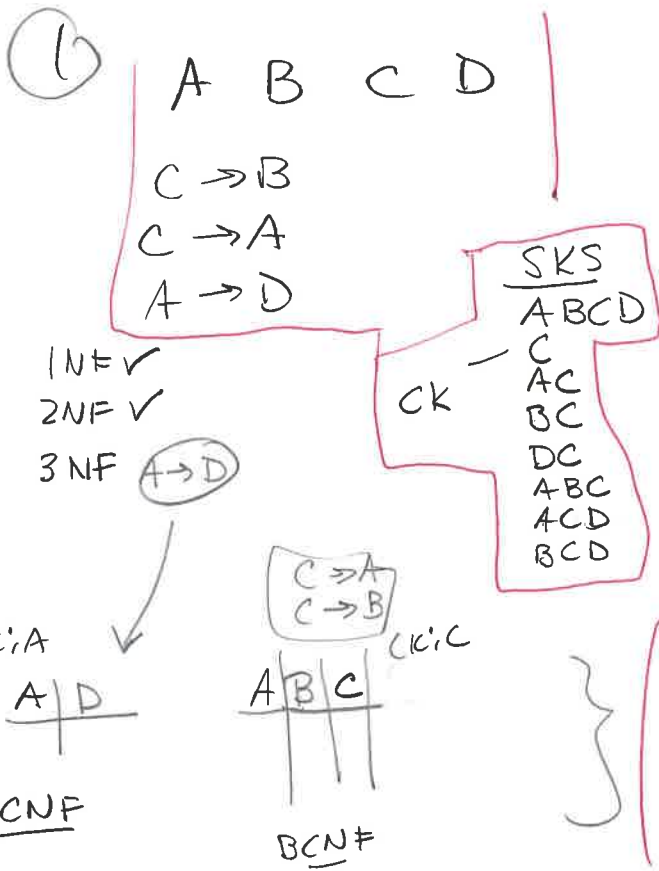
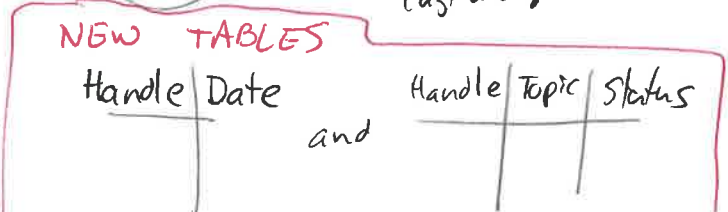
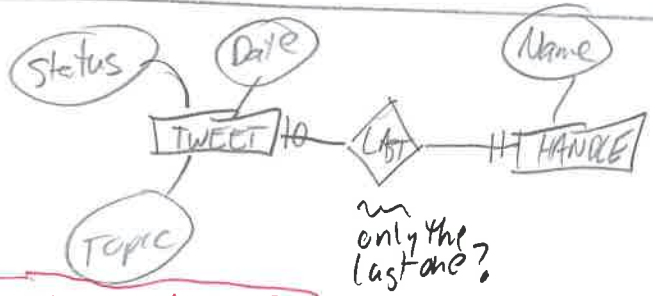
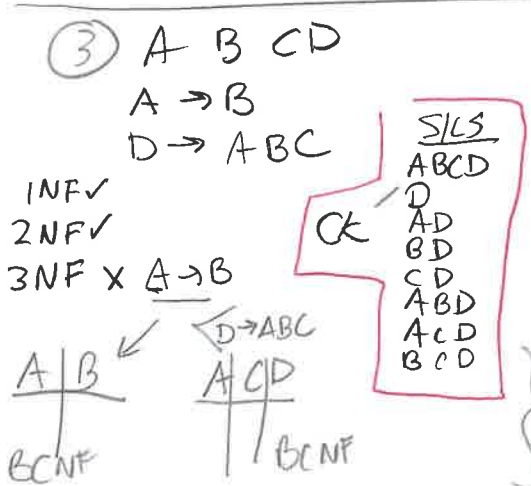


DBs NM FM HW

Relabeling Tables w/ LETTERS, LEFT TO RIGHT



But this might suggest a better set of tables



Doesn't Quite Match FD. why?

④ ABC

A → BC
C → AB

SKS
ABC
A
C
AB
AC
BC

1NF ✓
2NF ✓
3NF ✓
BCNF ✓



⑤ ABCD

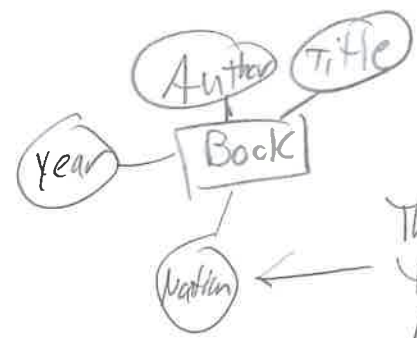
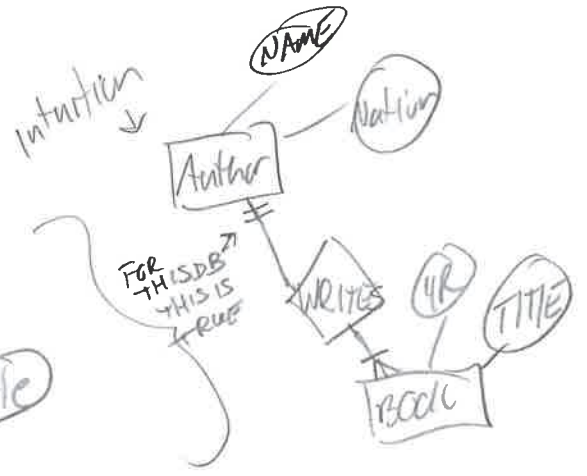
AD → C
C → A

SKS
ABCD
ABD
BCD

} Note that everything is prime!

1NF ✓
2NF ✓
3NF ✓

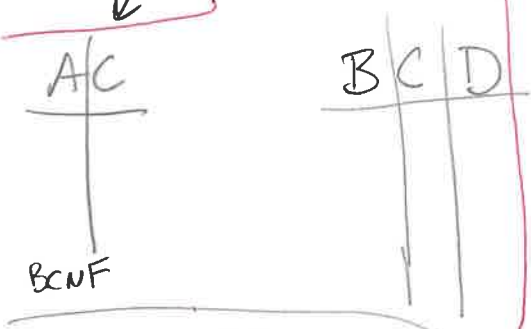
BCNF X Neither AD nor C is a superkey.



This feels weird but the constraints did not link author to nation.

C → A

NEW TABLES



BCNF

OR

AD → C
C → A



3NF but not BCNF

AD → C
Functionality feels to be in jeopardy in both these models. May need added constraints in the DBMS to ensure these stay as in fact as possible. But in a large database, this can produce a lot of overhead.